



## B1900 Air conditioner

- The B1900 Air conditioner is produced by Dometic Italy.
- It is the lightest roof mounted air conditioner
- At only 29kg it is designed to be mounted on a Pop top caravan.



- Light weight
- Aerodynamic, modern design with ultra low profile 235mm
- Easy and fast installation. The distribution box and air conditioner are sandwich construction
- Lowest internal profile of all air conditioners
- Suited to vans up to 16 ft 6 inches
- Removable and washable air filter



Very Low Profile 235mm





- Easy and fast installation. The distribution box is already attached. B1900 is sandwich construction and the 2 sections bolt together from top and bottom





Not all roofs are the same!

- Adjustable inner extension cowl is available!
- Optional aluminium H frame is available!



- The B1900 is extremely low profile and is the least invasive control panel on the market



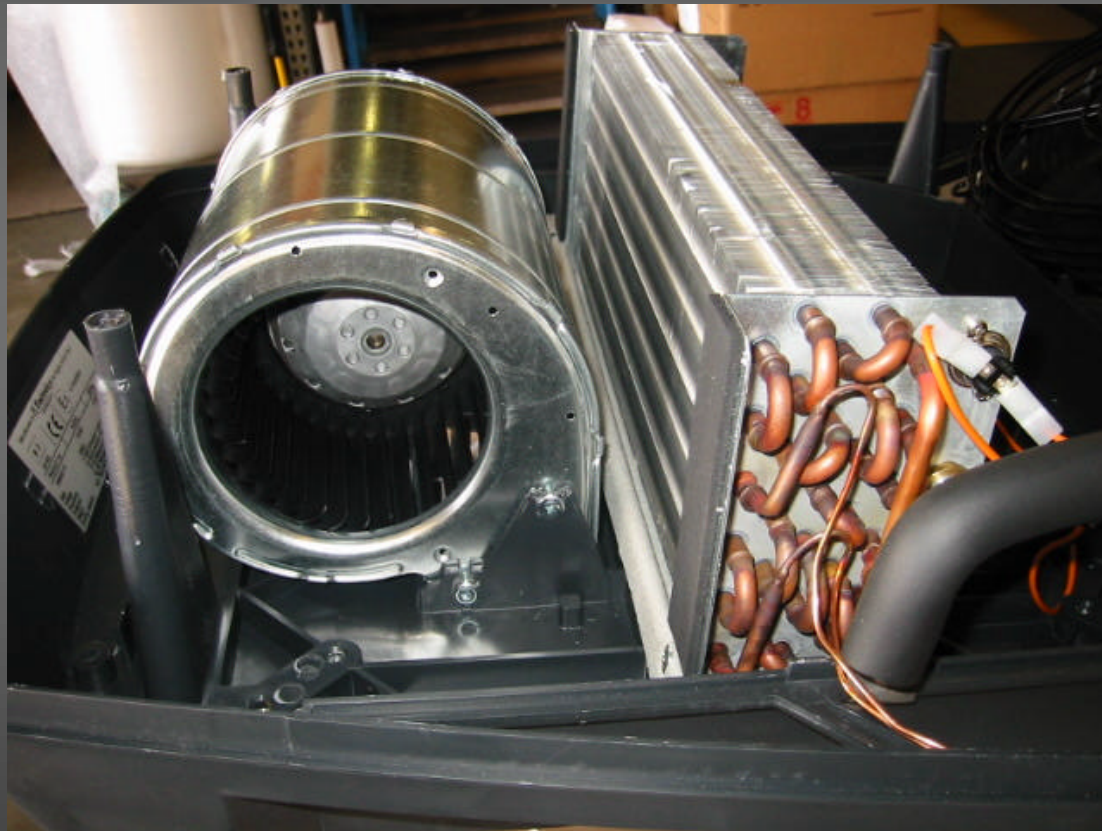


- Below the ceiling very little is seen





- Fan Motor and condenser







- Heating is provided via a low wattage element housed in an insulated air box.
- A separate fan blows cool air over the heater.
- The low wattage principle relies on large air movement to produce a temperature change in the vehicle.



• Element

