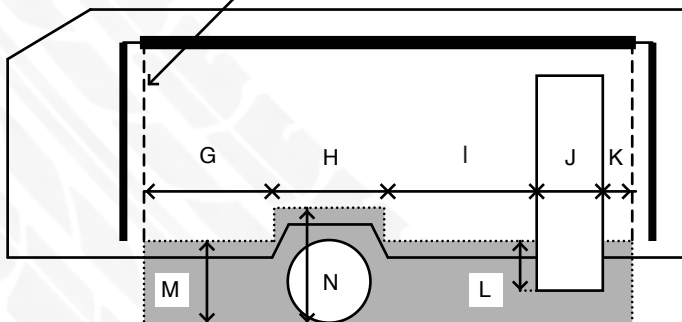


Example of profile 'A'

Come 30mm in from edge of vinyl roof both sides. Use door to measure down.



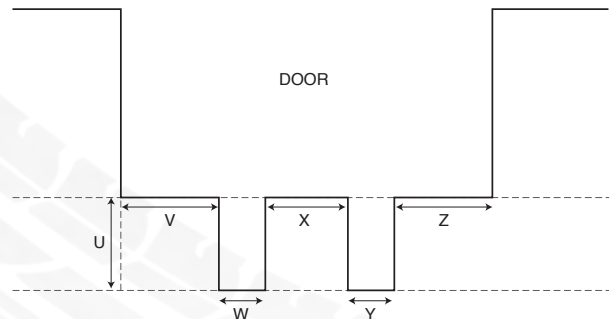
## Instructions

1. Ensure van is level and on level ground prior to commencing.
2. Windskirt will start and finish directly below 30mm in from the edge of the vinyl skin. To transfer this spot from the top, utilize the centre of the mounting brackets as a reference point.
3. Refer to the windskirt key and select the windskirt profile that will best suit your van. Upon choosing this, then follow the relevant G-K pathway and record measurements of same.

## THINGS TO LOOK FOR

1. If the start point and vinyl skin is impeded by an obstacle (ie window, door, vent etc), then the affected measurement needs to be increased by the same amount required to miss the obstacle. E.G Window sits 50mm outside of the start point at the front of the van, therefore the recorded measurement equals G+50mm.
2. The L M N measurements relate to the height and depth of the skirt. Ensure that you run above the corner moulding by a minimum 50mm to ensure press studs can be attached.
3. Pull down steps need to be measured in line with the diagram below.
4. If the windskirt is being fitted to steel recessed back from the wall profile, ensure that you add the recess dimension to the first and last measurement.
5. Where possible, try and avoid door stops and fridge vents.

## Step Cut out Key



Chosen Windskirt Profile \_\_\_\_\_

### RECORD VALUES

G _____	U _____
H _____	V _____
I _____	W _____
J _____	X _____
K _____	Y _____
L _____	Z _____
M _____	
N _____	